

Centerline Curve Table

CURVE	RADIUS	LENGTH	CHORD	CH.BEARING
C1	1813.30'	199.80'	199.70'	S 87°14'47"E
C2	531.88'	292.41'	288.74'	S 00°27'47"E

Lot Curve Table

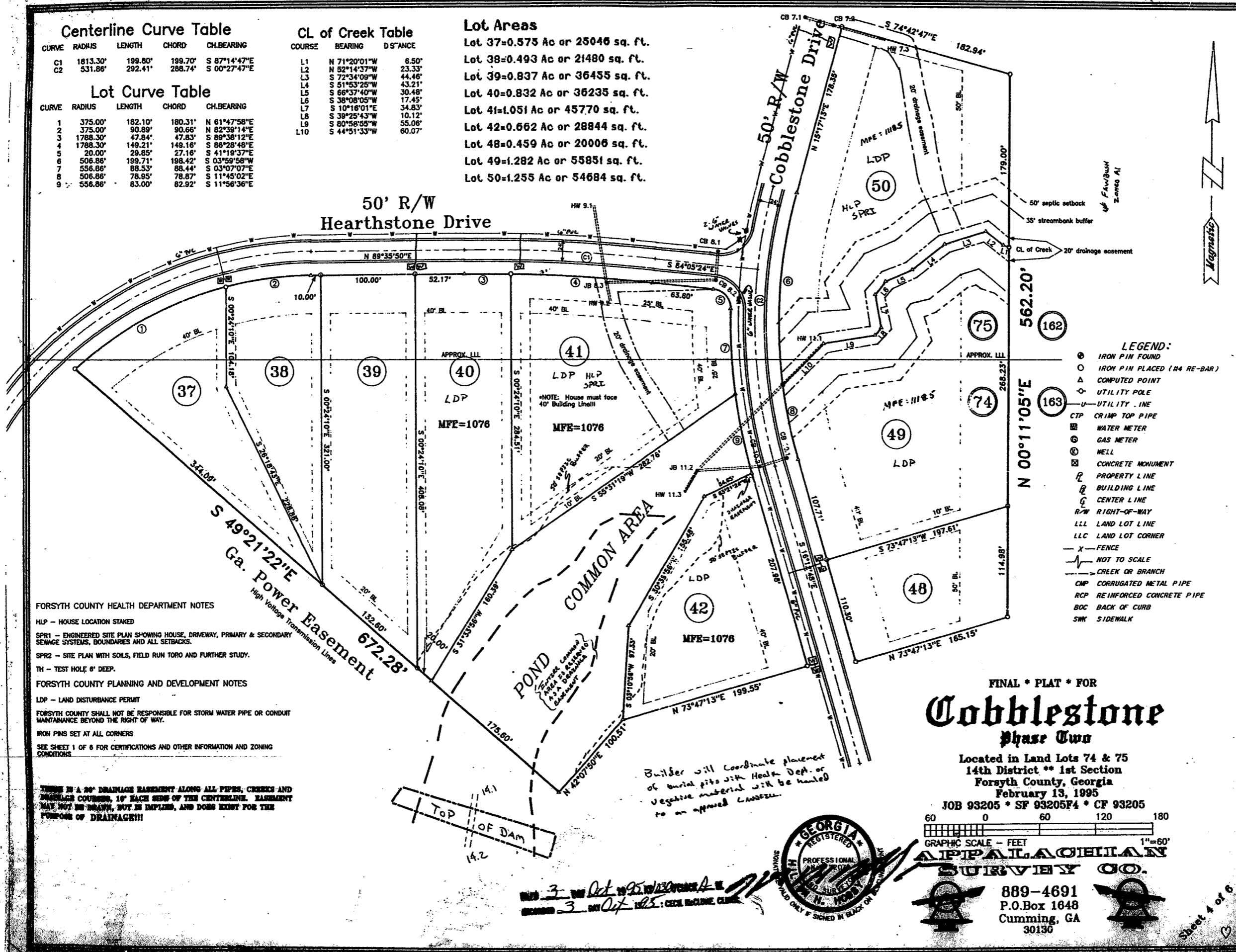
CURVE	RADIUS	LENGTH	CHORD	CH.BEARING
1	375.00'	182.10'	180.31'	N 61°47'58"E
2	375.00'	90.89'	90.66'	N 82°39'14"E
3	1788.30'	47.84'	47.83'	S 89°38'12"E
4	1788.30'	149.21'	149.16'	S 86°28'48"E
5	20.00'	29.85'	27.16'	S 41°19'37"E
6	506.86'	199.71'	198.42'	S 03°59'58"W
7	556.86'	88.53'	88.44'	S 03°07'07"E
8	506.86'	78.95'	78.87'	S 11°45'02"E
9	556.86'	83.00'	82.92'	S 11°56'36"E

CL of Creek Table

COURSE	BEARING	D.S'ANCE
L1	N 71°20'01"W	6.50'
L2	N 52°14'37"W	23.33'
L3	S 72°34'09"W	44.46'
L4	S 51°53'25"W	43.21'
L5	S 66°37'40"W	30.48'
L6	S 38°08'05"W	17.45'
L7	S 10°16'01"E	34.83'
L8	S 39°25'43"W	10.12'
L9	S 80°58'55"W	55.06'
L10	S 44°51'33"W	60.07'

Lot Areas

- Lot 37=0.575 Ac or 25046 sq. ft.
- Lot 38=0.493 Ac or 21480 sq. ft.
- Lot 39=0.837 Ac or 36455 sq. ft.
- Lot 40=0.832 Ac or 36235 sq. ft.
- Lot 41=1.051 Ac or 45770 sq. ft.
- Lot 42=0.662 Ac or 28844 sq. ft.
- Lot 48=0.459 Ac or 20006 sq. ft.
- Lot 49=1.282 Ac or 55851 sq. ft.
- Lot 50=1.255 Ac or 54684 sq. ft.



- LEGEND:**
- IRON PIN FOUND
 - IRON PIN PLACED (#4 RE-BAR)
 - △ COMPUTED POINT
 - ◇ UTILITY POLE
 - UTILITY LINE
 - CTP CRIMP TOP PIPE
 - WATER METER
 - ⊙ GAS METER
 - ⊙ WELL
 - ⊠ CONCRETE MONUMENT
 - P PROPERTY LINE
 - B BUILDING LINE
 - C CENTER LINE
 - R/W RIGHT-OF-WAY
 - LLL LAND LOT LINE
 - LLC LAND LOT CORNER
 - X- FENCE
 - NOT TO SCALE
 - CREEK OR BRANCH
 - CMP CORRUGATED METAL PIPE
 - RCP REINFORCED CONCRETE PIPE
 - BOC BACK OF CURB
 - SWK SIDEWALK

FORSYTH COUNTY HEALTH DEPARTMENT NOTES
 HLP - HOUSE LOCATION STAKED
 SPR1 - ENGINEERED SITE PLAN SHOWING HOUSE, DRIVEWAY, PRIMARY & SECONDARY SEWAGE SYSTEMS, BOUNDARIES AND ALL SETBACKS.
 SPR2 - SITE PLAN WITH SOILS, FIELD RUN TORO AND FURTHER STUDY.
 TH - TEST HOLE 6" DEEP.

FORSYTH COUNTY PLANNING AND DEVELOPMENT NOTES
 LDP - LAND DISTURBANCE PERMIT
 FORSYTH COUNTY SHALL NOT BE RESPONSIBLE FOR STORM WATER PIPE OR CONDUIT MAINTENANCE BEYOND THE RIGHT OF WAY.
 IRON PINS SET AT ALL CORNERS
 SEE SHEET 1 OF 8 FOR CERTIFICATIONS AND OTHER INFORMATION AND ZONING CONDITIONS

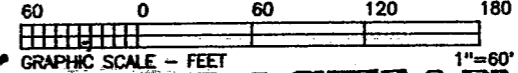
THESE ARE A 20' DRAINAGE EASEMENT ALONG ALL PIPES, CREEKS AND DRAINAGE COURSES, 10' EACH SIDE OF THE CENTERLINE. EASEMENT MAY NOT BE DRAIN, BUT IS IMPLIED, AND DOES EXIST FOR THE PURPOSE OF DRAINAGE!!!

Builder will coordinate placement of burial pits with Health Dept. or Vegetative material will be hauled to an approved location.

FINAL * PLAT * FOR
Cobblestone
 Phase Two

Located in Land Lots 74 & 75
 14th District ** 1st Section
 Forsyth County, Georgia
 February 13, 1995

JOB 93205 * SF 93205F4 * CF 93205



APPALACHIAN SURVEY CO.

889-4691
 P.O. Box 1648
 Cumming, GA
 30136



3 Oct 1995
 3 Oct 1995: CECIL McCLINE, CLM

Sheet 4 of 6